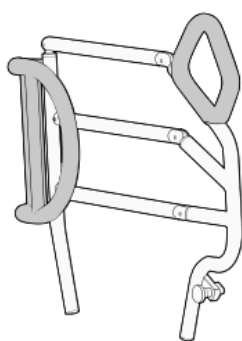


Technical Manual

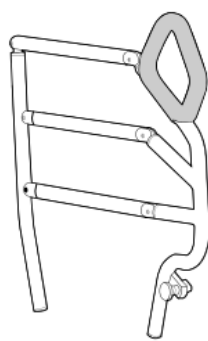
Mobility Assistance Systems (SAM)



SAM ACTIV



SAM ERGONOM



SAM ERGONOM LIGHT

TM_SAM_EN

15/07/2024

TABLE OF CONTENTS

TRANSPORT AND STORAGE	- 3 -
Assembling of SAM A614-00/A615-00, A618-00/A619-00, A628-00/A629-00	- 5 -
Assembling of SAM A647-00/A648-00, A649-00/A650-00, A651-00/A652-00	- 6 -
Assembling of SAM A616-00/A617-00	- 7 -
MAINTENANCE	- 8 -
Identification	- 8 -
Upkeep	- 8 -
Cleaning and disinfection	- 8 -
SPARE PARTS	- 9 -

TRANSPORT AND STORAGE

During transport, the mobility support system must be strapped and protected by plastic packaging.

Warning:

- Stacking packages on the mobility assistance systems is strictly prohibited.
- Stacking packages weighing over 60 kg/m² is strictly prohibited, irrespective of their position.

ASSEMBLY CONDITIONS

Only WINNCARE France medical beds listed below are compatible with SAM.

Bed reference	SAM reference	Bed reference	SAM reference
IAL1L *	A614/A615-00 A618/A619-00 A628/A629-00 A616/A617-00	IEX1L	A614/A615-00 A618/A619-00 A628/A629-00
IAL2L *	A614/A615-00 A618/A619-00 A628/A629-00 A616/A617-00	IEX2L	A614/A615-00 A618/A619-00 A628/A629-00
IAL3L *	A614/A615-00 A618/A619-00 A628/A629-00 A616/A617-00	IEX3L	A614/A615-00 A618/A619-00 A628/A629-00
IAL4L *	A614/A615-00 A618/A619-00 A628/A629-00 A616/A617-00	IEX4L	A614/A615-00 A618/A619-00 A628/A629-00
IAL5L / AL5 *	A647/A648-00 A649/A650-00 A651/A652-00 A616/A617-00	IEX5L	A647/A648-00 A649/A650-00 A651/A652-00
IXS1L	A614/A615-00 A618/A619-00 A628/A629-00	IMS1L-IMS2L	A614/A615-00 A618/A619-00 A628/A629-00 A616/A617-00
IXS2L	A614/A615-00 A618/A619-00 A628/A629-00	IMS3L / MS3	A647/A648-00 A649/A650-00 A651/A652-00 A616/A617-00
IXS3L	A614/A615-00 A618/A619-00 A628/A629-00	MS4	A647/A648-00 A649/A650-00 A651/A652-00 A616/A617-00
IXP1L	A614/A615-00 A618/A619-00 A628/A629-00	IML1L	A614/A615-00 A618/A619-00 A628/A629-00 A616/A617-00
IXP2L	A614/A615-00 A618/A619-00 A628/A629-00	IML2L / ML2	A647/A648-00 A649/A650-00 A651/A652-00 A616/A617-00
IXP3L	A614/A615-00 A618/A619-00 A628/A629-00	IAE1L	A614/A615-00 A618/A619-00 A628/A629-00
IXP4L	A647/A648-00 A649/A650-00 A651/A652-00	IAE2L / AE2	A647/A648-00 A649/A650-00 A651/A652-00
IXX1L	A614/A615-00 A618/A619-00 A628/A629-00 A616/A617-00	IAE3L / AE3	A647/A648-00 A649/A650-00 A651/A652-00
IXX2L	A614/A615-00 A618/A619-00 A628/A629-00 A616/A617-00	IAF1L / AF1	A647/A648-00 A649/A650-00 A651/A652-00
IXX3L	A647/A648-00 A649/A650-00 A651/A652-00 A616/A617-00	IAF2L / AF2	A647/A648-00 A649/A650-00 A651/A652-00
IXA1L / XA1	A647/A648-00 A649/A650-00 A651/A652-00 A616/A617-00	IXA1L / AX1	A647/A648-00 A649/A650-00 A651/A652-00 A616/A617-00
IXB1L / XB1	A647/A648-00 A649/A650-00 A651/A652-00 A616/A617-00	IDO1L	A614/A615-00 A618/A619-00 A628/A629-00 A616/A617-00
IXL1L	A614/A615-00 A618/A619-00 A628/A629-00 A616/A617-00	IDO2L	A614/A615-00 A618/A619-00 A628/A629-00 A616/A617-00

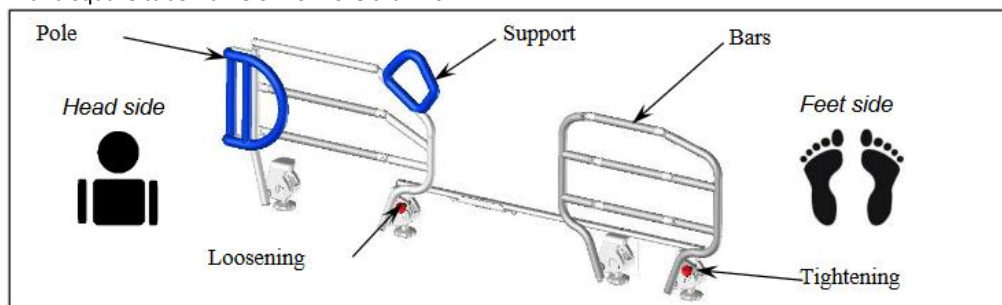
IXL2L	A614/A615-00 A628/A629-00	A618/A619-00 A616/A617-00	IDO3L	A614/A615-00 A628/A629-00	A618/A619-00 A616/A617-00
IXL3L	A614/A615-00 A628/A629-00	A618/A619-00 A616/A617-00	IDO4L	A614/A615-00 A628/A629-00	A618/A619-00 A616/A617-00
IXL4L	A647/A648-00 A651/A652-00	A649/A650-00 A616/A617-00	IDO5L	A647/A648-00 A651/A652-00	A649/A650-00 A616/A617-00
IXN1L / XN1	A647/A648-00 A651/A652-00	A649/A650-00 A616/A617-00	IDO6L	A647/A648-00 A651/A652-00	A649/A650-00 A616/A617-00
IXO1L	A614/A615-00 A628/A629-00	A618/A619-00 A616/A617-00	IDO7L / DO7	A647/A648-00 A651/A652-00	A649/A650-00 A616/A617-00
IXO2L	A614/A615-00 A628/A629-00	A618/A619-00 A616/A617-00	IDO8L / DO8	A647/A648-00 A651/A652-00	A649/A650-00 A616/A617-00
IXO3L / XO3	A647/A648-00 A651/A652-00	A649/A650-00 A616/A617-00	AG1 / AH1	A647/A648-00 A651/A652-00	A649/A650-00 A616/A617-00

* \geq is height less than 240 mm

SAM are delivered folded up.



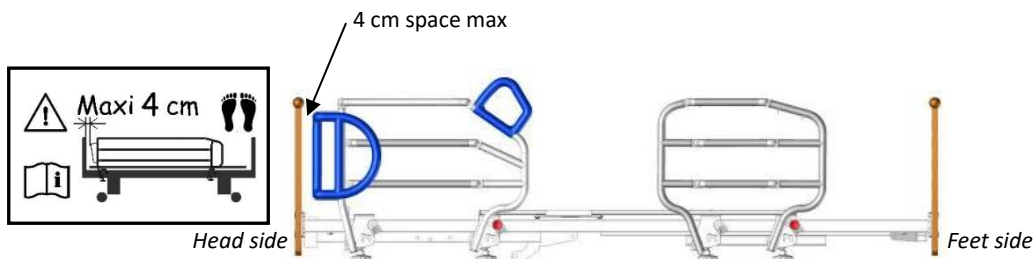
The mobility support system is intended to be used on 2000 mm long WINNCARE France medical beds with a square tube frame of no more than 40 mm.



SETTING UP THE SAM

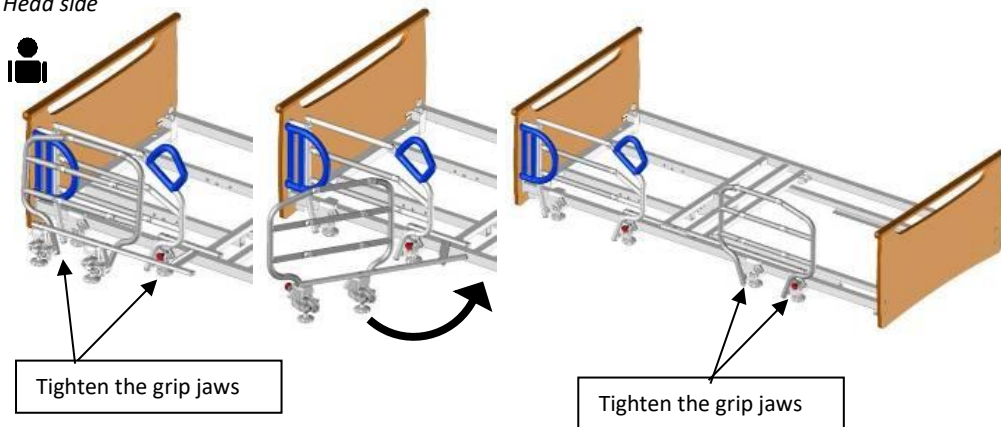
ASSEMBLING OF SAM A614-00/A615-00, A618-00/A619-00, A628-00/A629-00

The mobility assistance system is marked left and right by the grip jaws. Position the grip jaws as shown in the diagrams below.



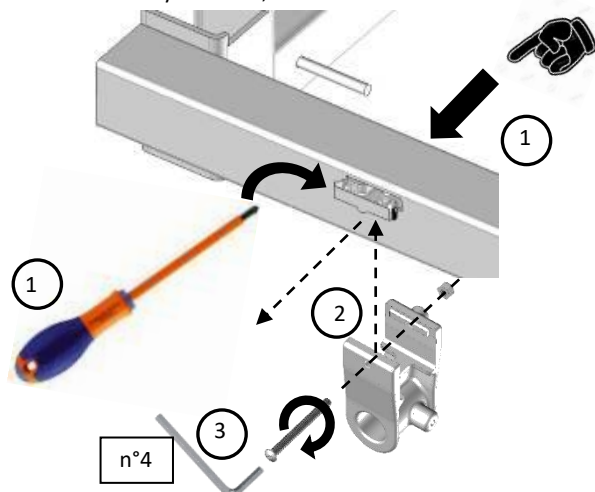
To assemble them on the bed, the longest section on the head end must be positioned by tightening the two adjustment knobs under the grip jaws. Then unfold the last one towards the foot end and tighten the knobs. Check that they are well locked.

Head side

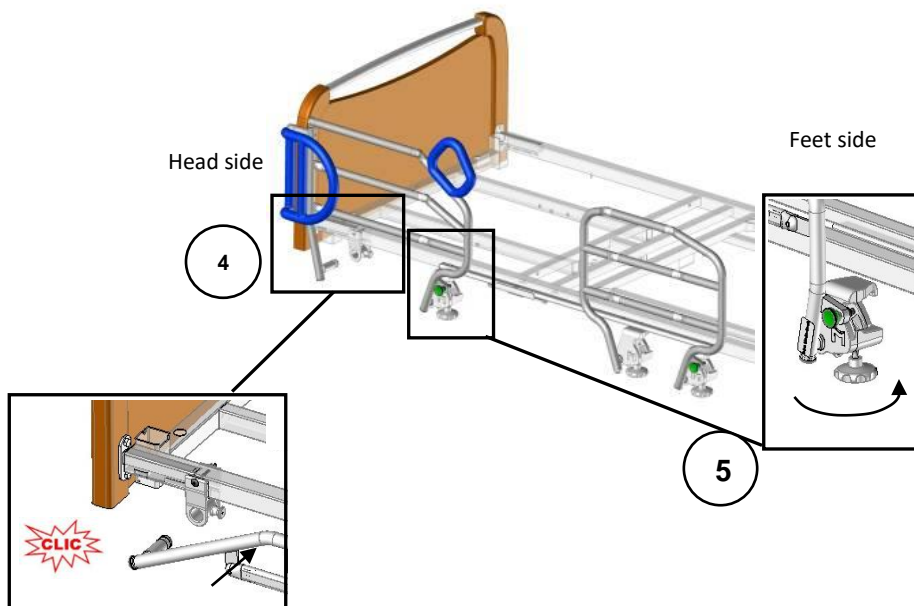


ASSEMBLING OF SAM A647-00/A648-00, A649-00/A650-00, A651-00/A652-00

Fixing jaw on the bed if it is not already installed, for this:



- 1 Remove the cap of the SAM by pushing inside or outside (depending on the assembly), then remove it with a screwdriver if necessary.
- 2 Clip the jaw in the slots provided for this purpose, by positioning the nut on the inner side of the bed.
- 3 Screw the jaw with the screw and nut provided with an Allen wrench n°4.



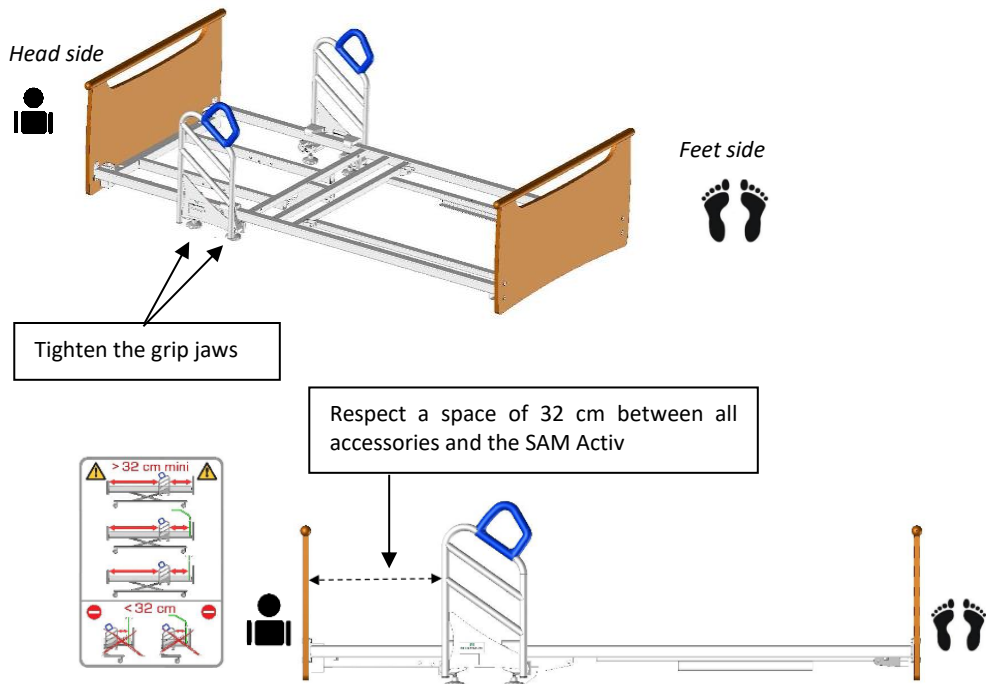
- 4 Insert the folded SAM upright into the jaw on the head side of the bed until you hear a 'CLICK',

- 5** Block the jaw on feet side through the clamping rondo and ensure its blocking.

To remove the SAM, loosen the rondo on the feet side **5** then disengage the pole without removing it by pulling the index finger on the side of the head side jaw **4**. Take the SAM with one hand at each end to remove it completely.

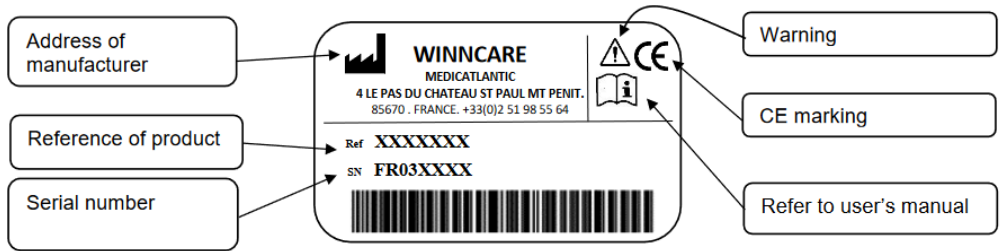
ASSEMBLING OF SAM A616-00/A617-00

To assemble them on the bed, the SAM must be positioned by tightening the two adjustment knobs under the grip jaws.



MAINTENANCE

IDENTIFICATION



UPKEEP

A detailed examination must be carried out on the mobility assistance system at least once a year on such parts as: the adjustment rondo screws, index pins, pins, and rivets.

CLEANING AND DISINFECTION

Clean the structure with soapy water and a soft cloth then rinse and wipe dry. All aggressive or scouring products such as detergents, powders, solvents, and bleach are prohibited.

The Mobility Assistance System is a non-critical appliance requiring "Low Level" disinfection.

We draw your attention to the fact that the recommendations below are drawn up according to the rules of good practice but are not a protocol. Contact the hospital hygiene department.

➤ OBJECTIVE

To recondition the SAM and prevent the transmission of germs from one patient to another.

To eliminate all organic soiling by:

- Physical action (cleaning),
- Chemical action (disinfection).

➤ INDICATION

Physical and bacteriological cleanliness of the SAM.

➤ EQUIPMENT

- Microfiber wipes.
- Detergent or Detergent-Disinfectant (Surface DD with CE mark) and surface Disinfectant (Chlorine substances, alcohol base < 30%).

Warning: undiluted DD products falling under the status of biocide pursuant to Regulation 528/2012 relating to the availability on the market and the use of biocide products and chloride bleach shall not be used pure. A remanence time must be applied according to the disinfectant manufacturer's instructions (the drying time without human presence is often the same as the remanence time) (Refer to the instruction manual)

- SANIVAP steam appliance with accessories.

➤ TECHNIQUE

- Daily maintenance with a surface DD product in one operation.

- Maintenance when the patient leaves, or periodically, by the process known as Bio cleaning observing the 3 operations:
 - o Cleaning is done by means of a cloth soaked in a surface detergent or Detergent-Disinfectant (DD) solution,
 - o Rinsing is done with cloth rinsed in clean water,
 - o Disinfection is done by means of a cloth soaked in a surface disinfectant solution.
- Specific maintenance by specialist contractors after removal of the SAM from the establishment:
 - o Dispose of the packaging after decontamination of the inside by spraying with a Detergent- Disinfectant solution,
 - o Bio cleaning operation, or,
 - o Steam cleaning (accessory with microfiber band) of the flat surfaces and the base slats. Change the washing mops regularly to prevent water accumulating. Clean the parts that are difficult to access with a steam nozzle (wheels, hinges after opening, corners, etc.). For tubes, use the steam nozzle with a microfiber cloth. Never direct the nozzles onto electrical boxes or actuators.
 - o Dry hinges with compressed air
 - o Attention: Disinfect jacks, electrical boxes and remote controls with a microfiber cloth soaked in disinfectant.
- **Do not rinse or wipe.**
- Check the operation of all the SAM functions,
- Repair, if necessary,
- Pack the SAM in thermoplastic film.

Warning:

- In the event of additional precautions (Contact precautions, Droplets or Air), apply the measures recommended by the hospital hygiene department,
- The use of a Javel water solution of more than 5000ppm (0.5% of active chlorine) should be justified by a microbiological risk and only applied for the required time (Risk of ageing of some materials, especially their colour),
- The concentration of alcohol-based surface disinfectant solutions should be less than 30%.

Note: The use of the terminal disinfection process is compatible with the medical bed and its accessories.

- Isolate the SAM in a disinfection room equipped with a particle filtering system and disposal for washing the floors and walls after disinfection,
- User a disinfectant with bactericidal, fungicidal and virucidal properties, either by spraying it evenly onto surfaces, applying it with a disposable cloth or spraying a disinfectant aerosol from a distance of 30 cm.

Warning:

- Comply with the precautions for using disinfectants indicated on these products,
- Leave to dry and protect the disinfected equipment from other equipment that has not been disinfected by a film and a label indicating the disinfection date.
- Product for external use only. Do not swallow. Store in a cool place and avoid contact with eyes.

SPARE PARTS

A list of spare parts is available from WINNCARE France after-sales service:

- Mail: sav@winncare.fr



WINNCARE France

4, Le Pas du Château
85670 SAINT-PAUL-MONT-PENIT
FRANCE



WINNCARE France

4, Le Pas du Château
85670 SAINT-PAUL-MONT-PENIT
FRANCE

Tél. : +33 (0)4.66.02.15.15
Fax. : +33 (0)4.66.02.15.00
Email: contact@winnicare.fr
www.winnicare.com

