

WIN  CARE

Ceiling Lift System



Starting Guide



LUNA[®]X5

SHAPING THE FUTURE OF CARE

DESIGN . SIMPLICITY . MAXIMIZED VALUE . SUSTAINABILITY

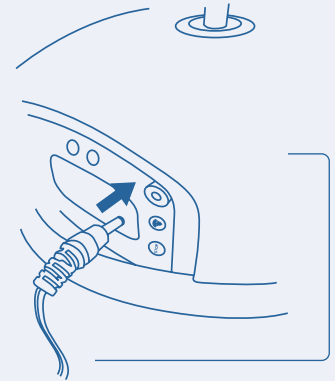
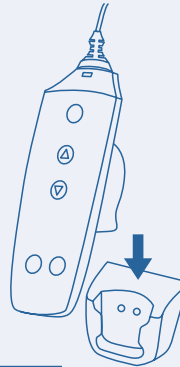
Starting Guide

TIPS

**When not in use,
always charge LUNA® X5 by:**

- Placing the hand control in the charging station.
- Connecting the charger cable to the side panel*.

or



Do not pull the hand control cable to move the ceiling lift



Use the medical bed's adjustable height to make the transfer easier



Make sure you are using the right sling size for the resident



FREQUENTLY ASKED QUESTIONS

If the hand control does not work:

- Check that the emergency stop is not activated (if yes, use Reset button).
- Check that the hand control is properly connected.
- Check battery level.

Why is the charger light blinking?

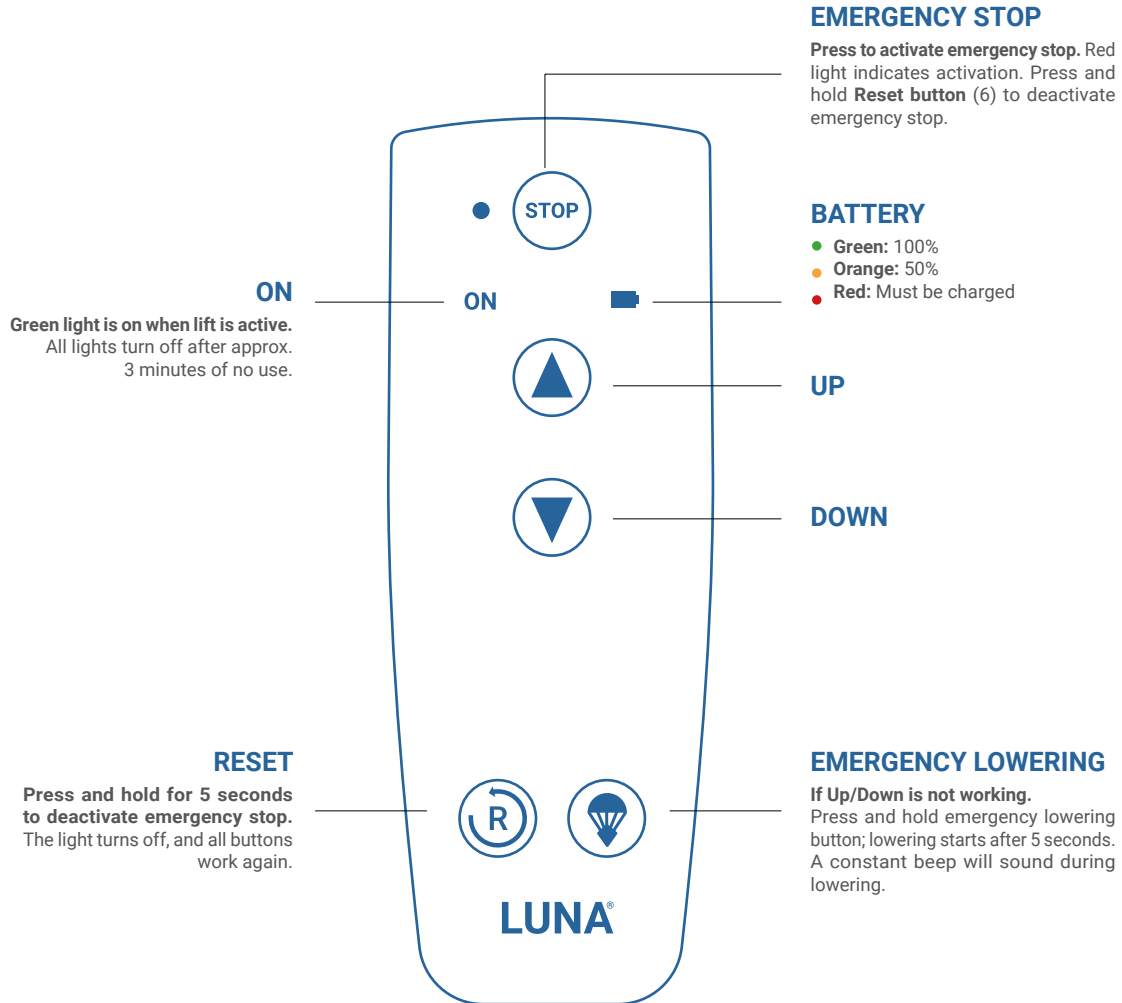
The green light on the charger blinks when the lift is not charging. Please put the lift back to charge as described previously.



*If track system is equipped with ITC (In-Track Charging), charging occurs automatically.

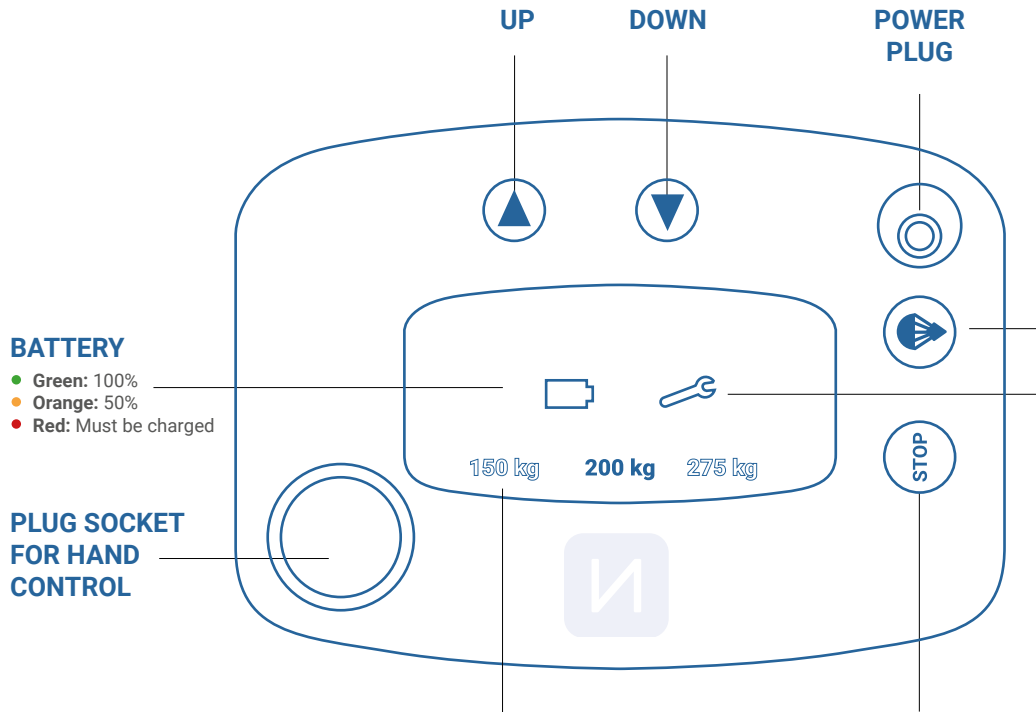
Starting Guide

HAND CONTROL



Starting Guide

SIDE PANEL



BATTERY

- Green: 100%
- Orange: 50%
- Red: Must be charged

PLUG SOCKET FOR HAND CONTROL

WEIGHT

- Green
Hoist is set to the selected weight capacity.
- Red
The load exceeds the selected weight limit. In this case, the user can only be lowered because of safety reasons.

EMERGENCY STOP


Press to activate emergency stop. Red light indicates activation. Press and hold Reset button to deactivate emergency stop.


EMERGENCY LOWERING


Use **ONLY** in situations where it is not possible to lower the user normally.

If Up/Down is not working. Press and hold emergency lowering button; lowering starts after 5 seconds. A constant beep will sound during lowering.

SERVICE INDICATOR

 **Yellow**
1 month left until annual service (lights up for 30s at activation).

 **Orange**
Annual service **exceeded by 1 month** (lights up until it goes standby).

 **Orange + Beep**
Annual service **exceeded by 2 months** (lights up until it goes standby + 3 beeps upon activation).



The display on the main lift panel automatically rotates when the lift is flipped over to ensure the indicators remain easy to read in any position.

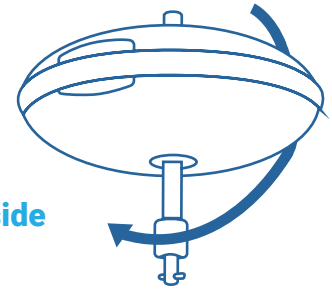
How to move your lift

FROM ONE ROOM TO ANOTHER

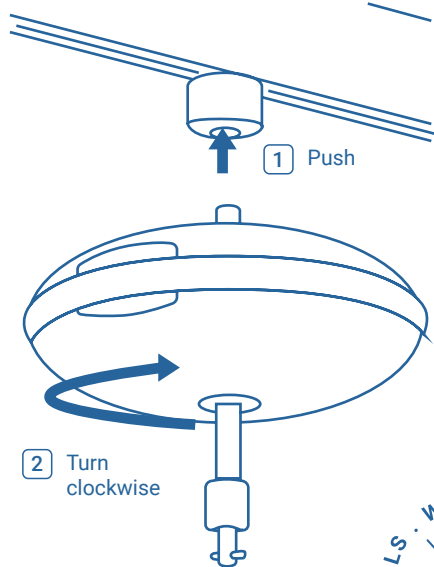
To switch your lift from fixed to portable mode...
(or the other way around)

- In fixed mode, the lift is mounted directly in the track.
- In portable mode, the lift is mounted in the track with the strap.

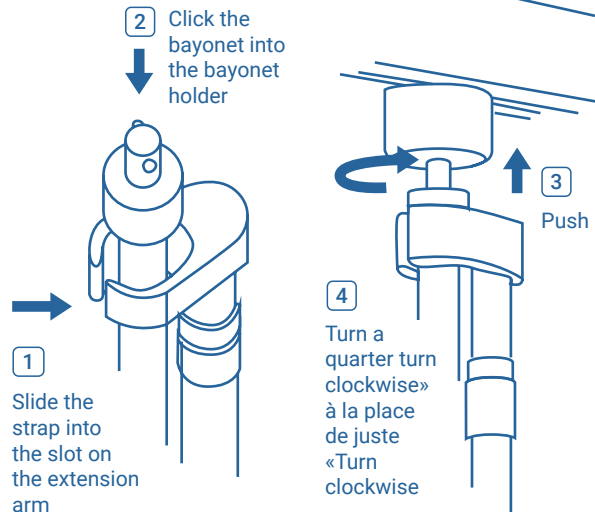
...just turn
the lift upside
down.



Fixed mode



Portable mode



+

Exert a slight tension on the strap when following these steps


⚠ Always check that the lift is correctly mounted before use.



SCAN FOR
MORE INFO!

WIN  CARE



 SWL 150 / 200 / 275 kg