

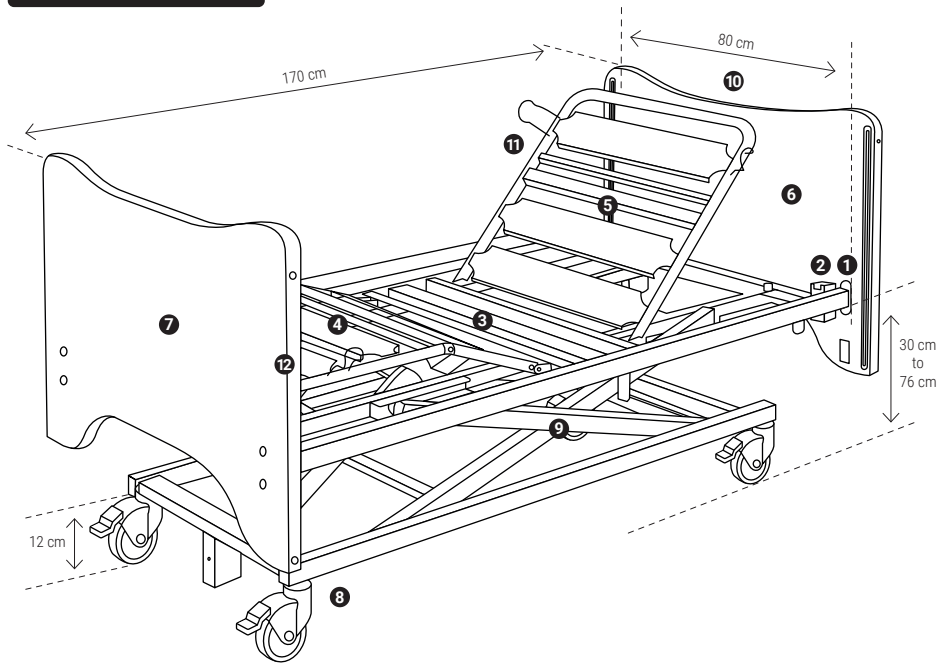


TECHNICAL  
MANUAL

# KALIN

MEDICAL BED KALIN  
(PO3P+OPTION)

**Instructions for use**



- 1 Angled lifting pole slots,
- 5 Slatted back rest ( $\leq 70^\circ$ ),
- 9 Base and cross braces
- 2 Stand slots,
- 6 Head panel,
- 10 Remote control storage box,
- 3 Bed base,
- 7 Foot panel,
- 11 Mattress retainer,
- 4 Leg rest with slats ( $\leq 42^\circ$ ),
- 8 Wheels  $\varnothing 10$  cm,
- 12 Leg rest handle.

Weight of the device		
Width	80 cm	
(P/)	70 kg	154 Lb

Safe working load			
70 kg patient	125 to 145cm patient	115 kg	
		45 kg Mattress	30 kg Accessories



**580049**  
Version 2026.05.05

**WINNOCARE France**  
4, Le Pas du Château,  
85670 Saint-Paul-Mont-Penit  
(France)

Tel. : +33 (0)4 66 02 15 15  
Fax. : +33 (0)4 66 02 15 00  
Email : [contact@winnocare.com](mailto:contact@winnocare.com)

**WINNOCARE France**  
4, Le Pas du Château,  
85670 Saint-Paul-Mont-Penit  
(France)



## 1. INDICATIONS

### Device Intended Use

Compensation for disability. Prevention.

### Indications

The KALIN bed is indicated for children and adults with atypical anatomy to compensate for substantial alterations, lasting or permanent impairment of one or more physical functions (locomotor deficiency of the lower and/or upper limbs) or certain disabling health problems, and to prevent or reduce the repercussions of prolonged immobilization. Help with care and activities of daily living.

### Target patient and user group

Children and adults with atypical anatomy between 125 and 145 cm and weighing less than 70 kg.

### Contra-indications

- > To be determined by the prescribing doctor.
- > Patient's weight and height different than those specified in the conditions of use.



### Report undesirable side-effects

Inform the competent authority if you consider or have reason to believe that the device presents a serious risk or that it is a fake product.

## 2. COMPOSITION OF THE MEDICAL DEVICE

Frame, articulated and variable height bed base, head and foot boards.

### Accessories (option):

Angled lifting pole slots, stand slots, wall stop, transport kit, bed skirt, bedpan and urinal supports, barrier protector, wooden bed rails.

Incompatible accessories, panels and mattresses can create hazards. Only accessories and panels distributed by WINNCARE France guarantee compatibility with our products and the conformity of the whole (CE marking).

## 3. CLINICAL BENEFIT, PERFORMANCE

### Expected clinical benefits

Preservation of the patient's state of health, mobility, activity and transfers. Reduction of the repercussions of the immobilisation syndrome. Protection of the health and safety of users and others.

### Medical device performance

#### For patients:

- Preserves or improves the patient's physical and/or psychological state (back rest, leg rest flat),
- Acts as a fixed walking (removable bed panels),
- Helps prevent pressure ulcers (back rest 30° and/or Fowler or semi-Fowler positions),
- Protection of patients and/or carers (Wooden rails full length),
- Mattress stability (lateral stop),
- Reducing the severity of falls from the bed (low bed).

#### For healthcare professionals and/or caregivers

- Aide à la réalisation des soins (relève-buste, relève-jambe, à plat),
- Accès facilité à la tête et les pieds pour des soins spécifiques (panneaux de lits amovibles),
- Ergonomie et aide aux transferts (hauteur variable).

## 4. USAGE INSTRUCTIONS

### 4.1 User training and qualification

User training must be given by people trained and qualified in the use of the bed and accessories, cleaning and disinfection procedures and products.

The child's physical and mental abilities must be assessed in order to set the bed's functions.

### 4.2 Operating the device

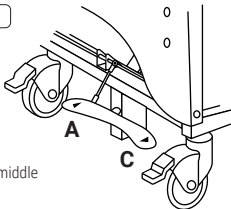
Run a series of no-load tests to familiarise yourself with the bed's functions.

#### Bed braking

##### Centralised braking

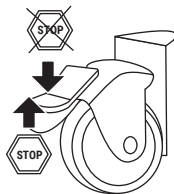
##### (option A)

1. Braked wheels: press the pedal (red side with your foot).
2. Free wheels: press the pedal (A or C) with your foot to obtain the middle position.
3. Steering wheel: press the pedal (green side) with your foot.



##### Separate braking

Make sure the wheels are locked when trying to move the bed. Failure to comply with this instruction may result in the patient or other person falling when using the bed for support.

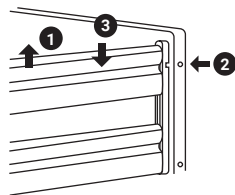


#### Wooden rails (full length)

See bed barrier instructions for use available on the WINNCARE website ([www.winncare.com](http://www.winncare.com)).

##### To raise the rail

- ① Take the upper bar and lift it until it is locked at the top of the panel. Verify that it is correctly locked into place.



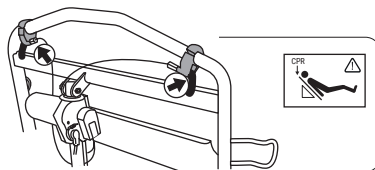
##### To lower the rail

- ① Lift the upper bar of the rail.
- ② Press the lock button at the top of the bed board.
- ③ Slide the rail gently down the bed until you feel it come to a stop at the end. The upper bar supports the lower bar.

## Emergency release of the back rest

### (Cardio Pulmonary Resuscitation = CPR) (option -B)

Activate one of two release handles If the handle is released the back rest will stop moving.

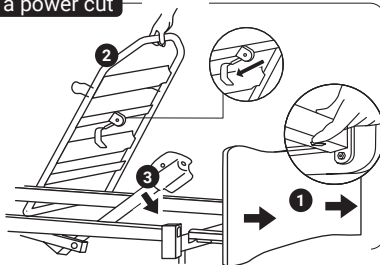


## Flattening of the back rest without CPR in the event of a power cut

### Version of back rest with no CPR handle

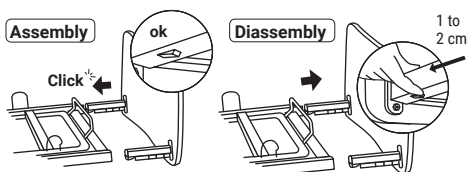
In the event of malfunction, power cut or to flatten the back rest (recommendation: handling by two caregivers).

- A** Dismantle the headboard ① by pressing the "Easymove™" systems under the long side panels.
- B** Stand at the head of the bed and take hold of the back rest ② with one hand. Push or lift the back rest to compensate for the pressure exerted by the patient and unhook the safety pin ③ by the connecting with the other hand. The back rest jack will then pivot downwards.
- C** Accompany the descent of the back rest.



## Fitting the "Easy Move" panels

- ⚠** Fit the taller board at the head end



## Leg rest

Leg rest with folding mechanism with or without position memory.

### 4.3 Cleaning and disinfection

Consulter le manuel technique.

### 4.4 Maintenance

Annual preventive maintenance of the bed and its accessories must be carried out at least once a year by the operator or the supplying organisation.

Only original parts and components distributed by WINNCARE France guarantee the safety and performance of the device.

Repairs to electrical parts must be carried out exclusively by our supplier. The lifetime of the medical bed (base, cross braces and bed base) is eight (8) years, and that of the accessories and boards is five (5) years.

## 5. WARNINGS, PRECAUTIONS FOR USE

### Hanging remote control

Lock the bed functions by turning the key clockwise. Unlock by turning in the opposite direction.

### Storing the remote control

If the bed is intended for a child, the remote control should be stored in its box. This avoids any risk of accidental activation and suffocation by the cable.

Store the remote control in the box when the bed is not in use.

### Other warnings and precautions for use

1. When changing the position of the bed, make sure that no or parts of an object or person's body are caught between the bed and any of its components.
2. If there is a risk of falling, place the bed in the lowest position while the patient is resting in order to reduce the severity of the fall.
3. Improper use of the bed may damage it or cause accidents to users (using the bed outdoors or transporting the patient in a vehicle, moving the bed on a slope with a gradient of more than 10°, sitting on the side of the back rest or leg rest section).
4. Use only original parts and components distributed by WINNCARE France to guarantee safety and maintain product conformity.
5. Incompatible mattresses can create HAZARDS. We recommend using WINNCARE France mattresses measuring 170 x 82 cm.
6. The distance between the top of the bed rail and the surface of a non-therapeutic, uncompressed mattress must be at least 220 mm.
7. The bed must not be used as a stretcher.
8. Do not activate all the motors at the same time when the patient is in the bed.
9. When handling, take care not to catch the motor or remote control cables or allow knots to form in them. Keep cables well away from the ground and wheels.
10. The rails must not be used to handle or move the medical bed.
11. The power socket must remain accessible so that the bed can be disconnected quickly without pulling on the cable.
12. Lay out the bed in the room, taking into account the perimeter of use for the different functions (variable height, Trendelenburg, etc.), particularly if it is equipped with a support arm or rails.
13. When changing the height or angle of any part of the bed, ensure that no object or part of the patient's or carer's body is between the bed, panels, accessories and the floor or between the panels and the base or between the cross-bars.
14. (Re)assess the risk of patient entrapment in non-moving parts of the medical bed associated with bedrails and therapeutic mattresses (EN 50637:2017 standard for childs).

## 6. SIDE EFFECTS AND RESIDUAL RISKS

Patient fall. Immobilisation syndrome. Aggravation of fractures that have not been stabilised and/or procedural pain when the articulated parts of the bed base are moved.

### Report to your doctor or nurse:

- Any abnormal event following skin contact with the surface of the materials from which the bed and its accessories are made.
- If the required measures concerning the use of the medical device cannot be followed.

All serious incidents which are related to the device must be notified to the manufacturer and the competent authority of the member state in which the user and/or patient resides.

	CONSEQUENCE	PRÉCONISATION
<b>RISK -&gt; Trapping</b>	Hands pinched	Move the leg rest or back rest using the handles or barriers at the specified points.
	Crushing of the body or an object	<p>Before lowering the bed, check that the area between the bed and the floor is free.</p> <p>Check before operating the central brake pedal that the area between the pedal and the floor is free.</p>

## 7. STORAGE, HANDLING, DISPOSAL

**Use**

**Storage**

### Disposal

Consult the manufacturer or distributor of the device.

	Caution, see technical manual and/or instructions for use		Batch number
	Compliant with Regulation (EU) 2017/745 on medical devices		Serial Number
	Separate collection at end of life		Patient Weight Range
	Warning, Selective sorting of electrical and electronic waste		Warning
	Date of manufacture		Dry cleaning excluded, use of solvent-based remover excluded.
	Compatible with chlorine-based disinfection solution (5,000 ppm or 0.5% active chlorine).		

### Remote controls

Remote control with selective mechanical locking



Back rest



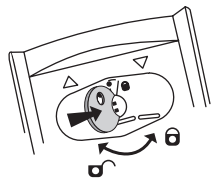
Variable height of the bed base



Electric folding leg rest



Back rest and electric folding leg rest



WIN CARE

**UK** **REP**

Mangar International Limited (WINN CARE group)  
 Presteigne Industrial Estate,  
 Presteigne, LD8 2UF, Powys,  
 United Kingdom